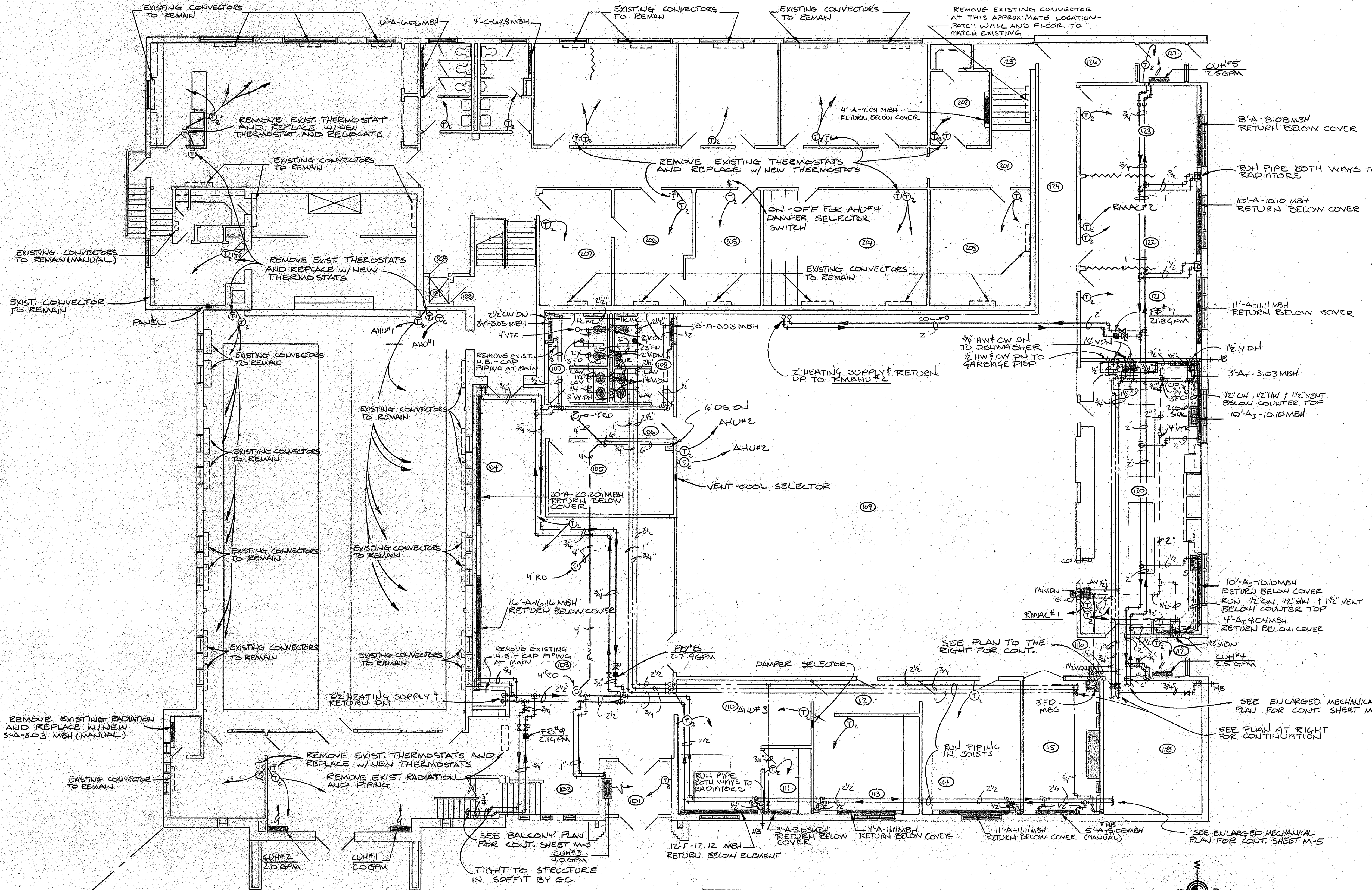


ROOM SCHEDULE

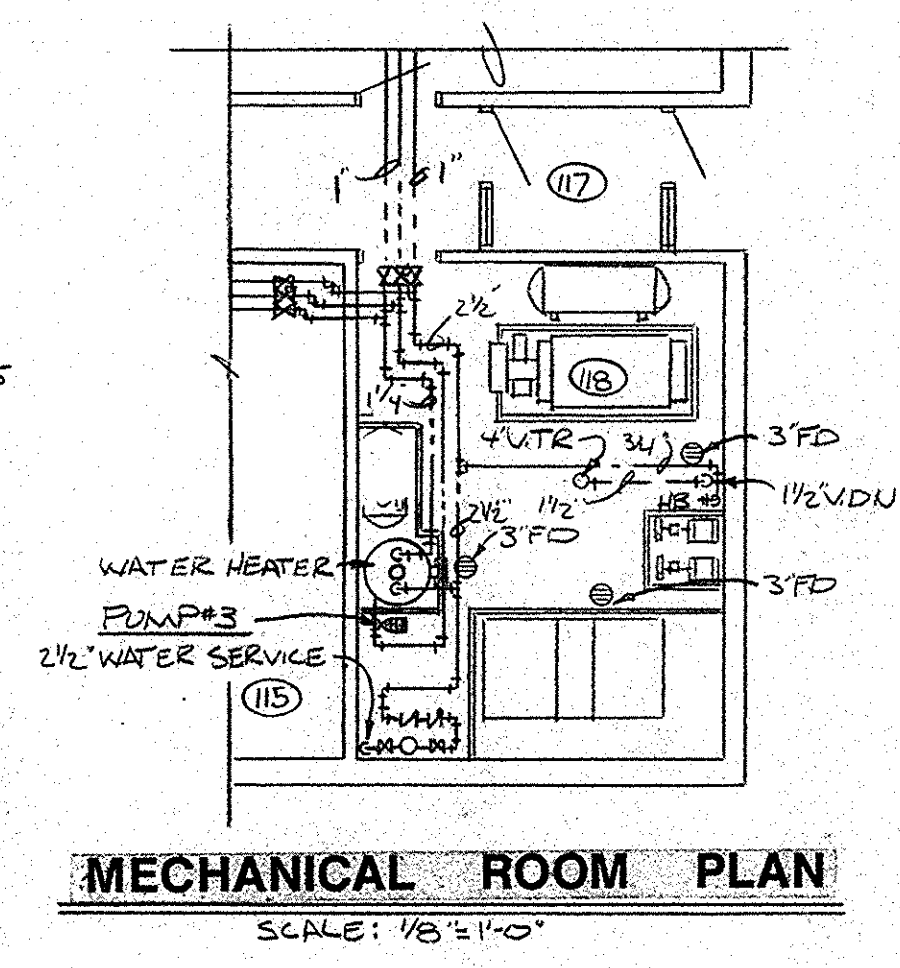
- 101 VESTIBULE
- 102 STAIRS
- 103 NARTHEX
- 104 CORRIDOR
- 105 NURSERY
- 105A STAIRS
- 106 CORRIDOR
- 107 WOMEN'S TOILET
- 108 MEN'S TOILET
- 109 MULTI-PURPOSE ROOM
- 110 SECRETARY
- 111 WORKROOM
- 112 CORRIDOR
- 113 OFFICE
- 114 OFFICE
- 115 STORAGE
- 116 CORRIDOR
- 117 VESTIBULE
- 118 MECHANICAL ROOM
- 119 DELETED
- 120 KITCHEN
- 121 CLASSROOM
- 122 CLASSROOM
- 123 CLASSROOM
- 124 CORRIDOR
- 125 LANDING
- 126 CORRIDOR
- 127 VESTIBULE

- 201 EXISTING STAIRS
- 202 EXISTING STORAGE
- 203 EXISTING CLASSROOM
- 204 EXISTING CLASSROOM
- 205 EXISTING CLASSROOM
- 206 EXISTING CLASSROOM
- 207 EXISTING OFFICE

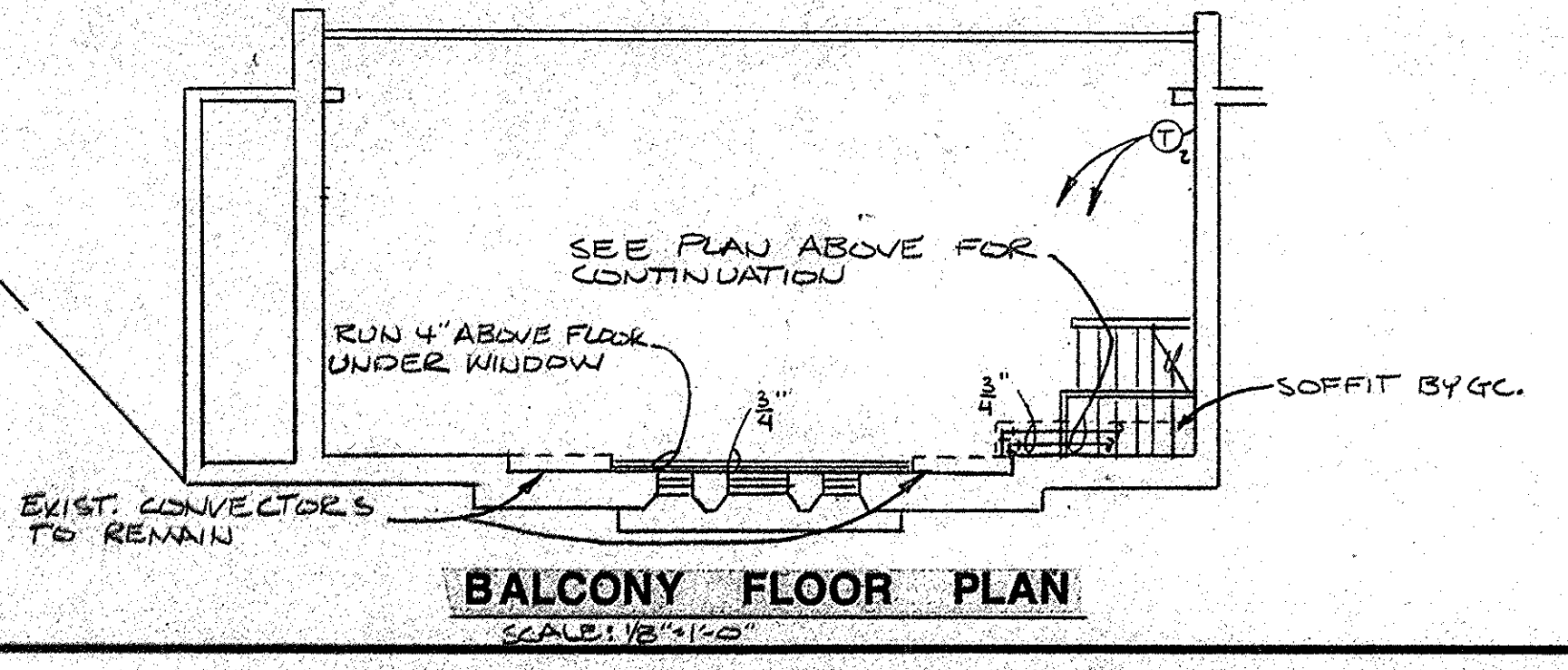
- 301 PENTHOUSE



FIRST FLOOR PLAN - PLUMBING & HEATING
SCALE: 1/8" = 1'-0"



MECHANICAL ROOM PLAN
SCALE: 1/8" = 1'-0"



BALCONY FLOOR PLAN
SCALE: 1/8" = 1'-0"

ROBY, QUINTAL & EVERSON
CONSULTING ENGINEERS
MITCHELL, SOUTH DAKOTA

hkg
ARCHITECTS

REVISED DATE 7/29/94	CLASSROOM/MULTI-PURPOSE ADD. ZION LUTHERAN CHURCH ABERDEEN, SOUTH DAKOTA	DRAWN BY JL	DATE 8/20/93
CERT. NO. C-116	Herges, Kirchgasser, Geisler & Assoc. Aberdeen, S.D.	CHECKED BY KLE/EGG	OF 8
		M-3	