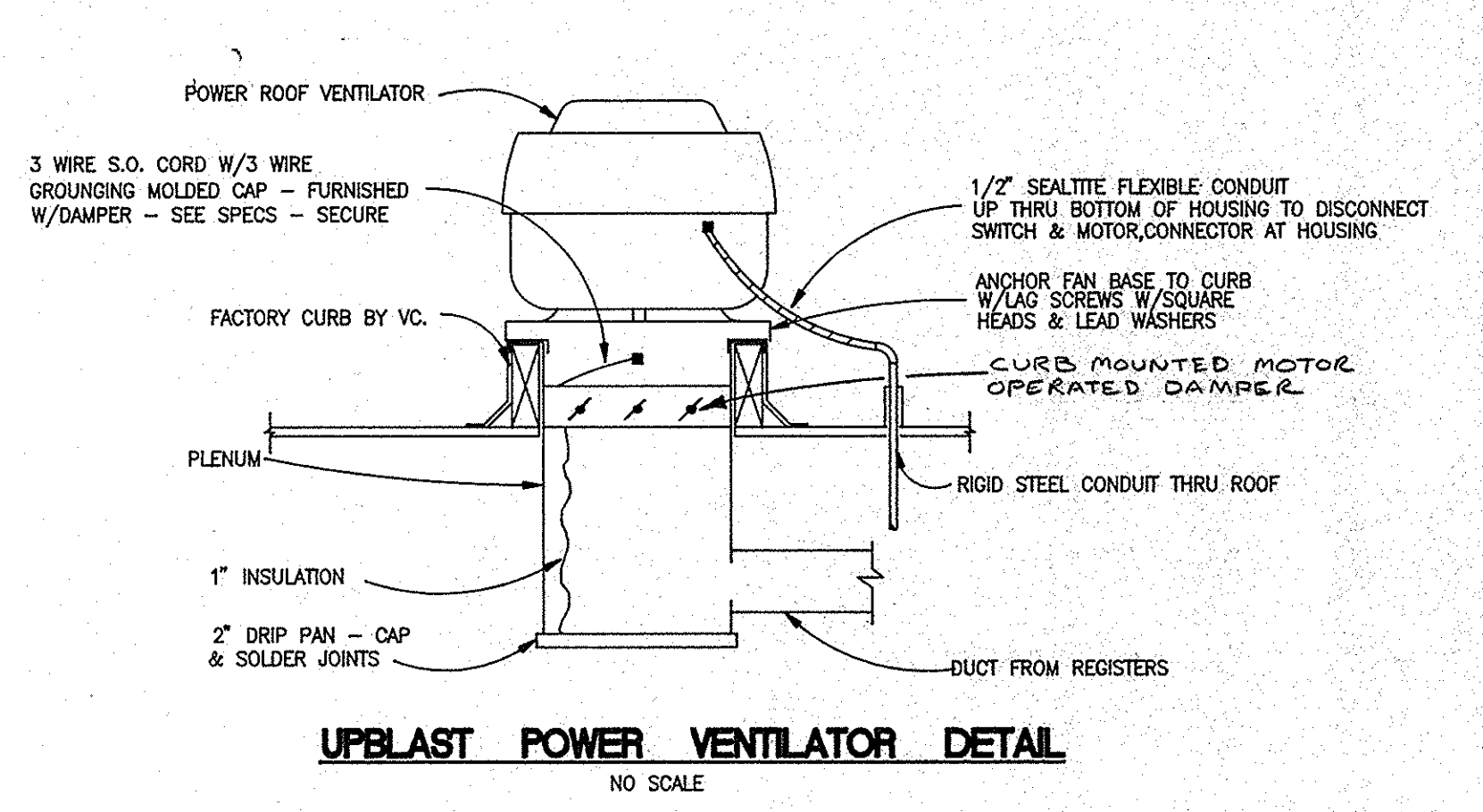
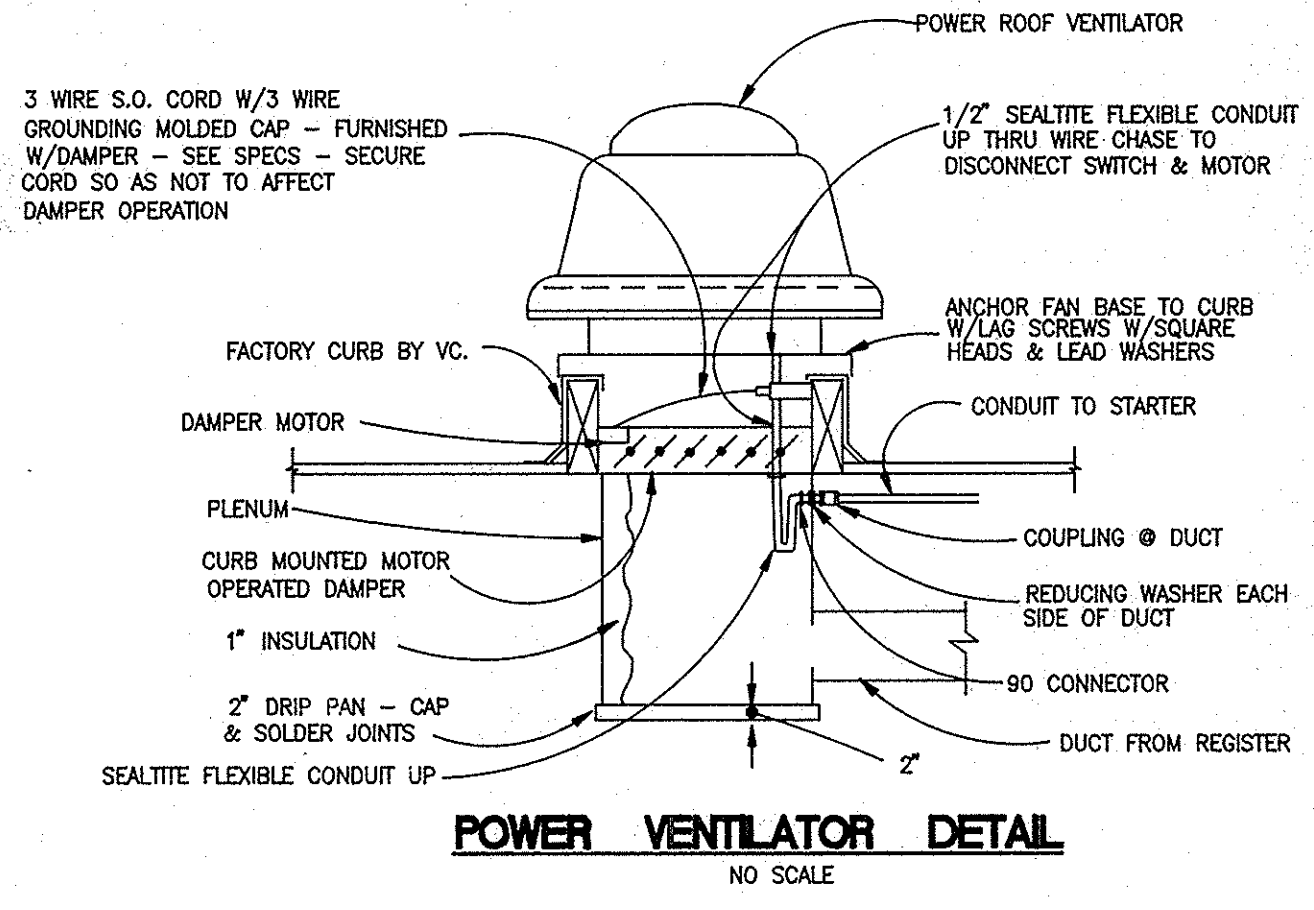


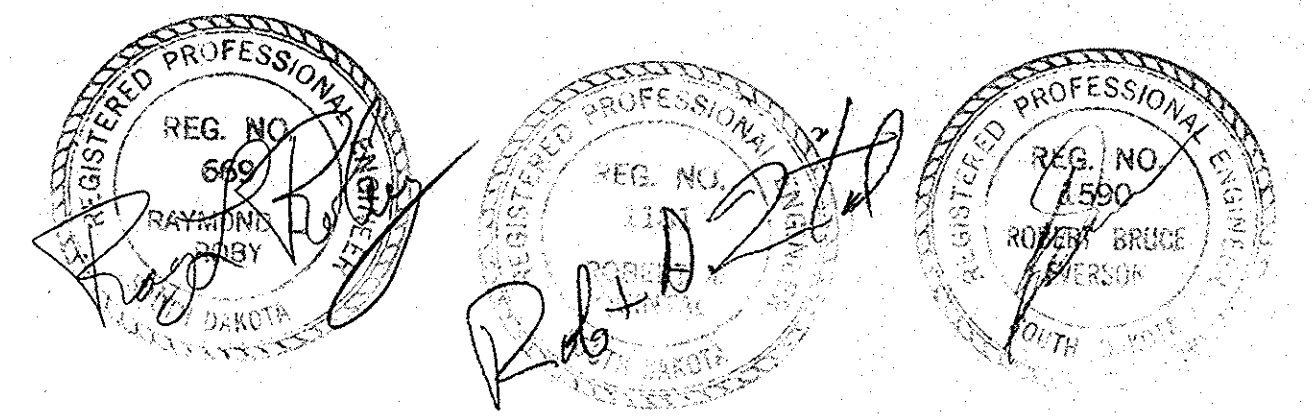
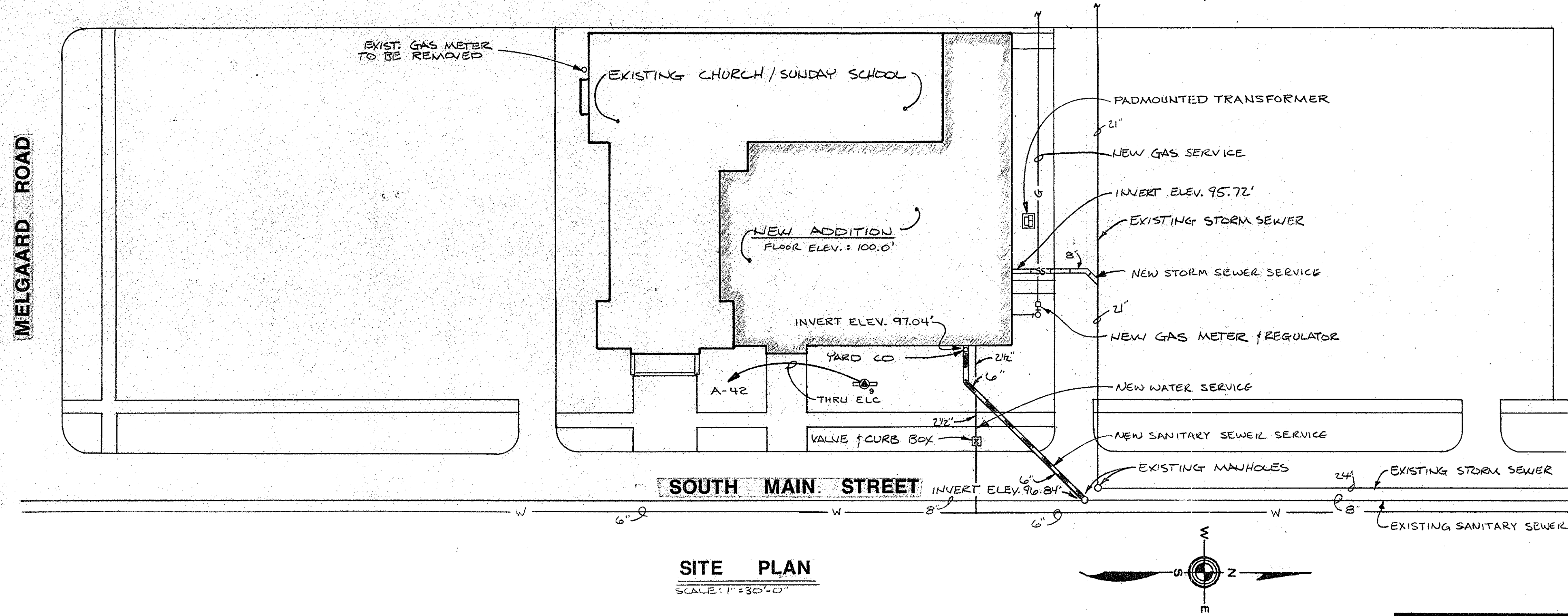
SYMBOL	USE	LOCATION		CONTROLLER		TYPE		SECS		SWITCH		INFORMATION		REMARKS		POWER												
		MOTOR	CONTROLLER	SWITCH	MANUAL STARTER	FORM 1 W/PILOT	FORM 2	FORM 3	NORMAL OPEN	NORMAL CLOSED	DISCONNECT BY	POWER WIRING BY	TEMP. CONT. WIRING BY	AGL/STAT BY	TEMP. CONT. SW. BY	REMOTE CONT. SW. BY	SPEED SELECT SW. BY	INTEGRAL SW. BY	CONTRACTORS	NO BY	TIME CLOCK SWITCH	EMERGENCY SHUTDOWN SWITCH	E.A. INTERLOCK REQ. HP OR VOLTAGE	VOLTAGE PHASE	CIRCUIT	WIRE		
RNAHU#1	COOL/VENT EXISTING NAVE	ROOF	ROOF	NAVE						EC													YES	5	208	3	M-1	3#10
RNAHU#2	COOL/VENT MULTI-PURPOSE ROOM	ROOF	ROOF	109						EC													YES	7 1/2	208	3	M-6	3#6
AHU#3	COOL/VENT NEW OFFICES	118	118	110						EC													YES	2	208	3	P2-31,33,35	3#12
AHU#4	VENT EXISTING CLASSROOMS	207A	207A	201						EC													YES	1/2	120	1	P2-13	2#10
RMAC#1	COOL KITCHEN	ROOF	120							EC													1	208	1	M-3	3#8	
RMAC#2	COOL CLASS ROOMS	ROOF	122							EC													1	208	3	M-4	3#8	
PV#1	EXHAUST TOILET ROOMS	ROOF	106							EC													3	120	1	P2-14	2#12	
PV#2	EXHAUST MULTI-PURPOSE ROOM	ROOF	116							EC													YES	1/2	120	1	P2-1	2#12
PV#3	EXHAUST MULTI-PURPOSE ROOM	ROOF	116							EC													YES	1/2	120	1	P2-3	2#12
PV#4	EXHAUST FOR KITCHEN HOOD	ROOF	120							EC													YES	1/2	120	1	P2-5	2#12
CUH#1	HEAT EXISTING NARTHEX	EXIST. NARTHEX	EXIST. NARTHEX							MC	EC	EC	MC	MC	MC								1	120	1	P2-2	2#12	
CUH#2	HEAT EXISTING NARTHEX	EXIST. NARTHEX	EXIST. NARTHEX							MC	EC	EC	MC	MC	MC								1	120	1	P2-2	2#12	
CUH#3	HEAT VESTIBULE	101	101							MC	EC	EC	MC	MC	MC								1	120	1	P2-4	2#12	
CUH#4	HEAT VESTIBULE	117	117							MC	EC	EC	MC	MC	MC								1	120	1	P2-6	2#12	
CUH#5	HEAT VESTIBULE	127	127							MC	EC	EC	MC	MC	MC								1	120	1	P2-6	2#12	
ACCU#1	COOLING FOR AHU#1	ROOF	ROOF							MC	EC	EC	MC	MC	MC								13.1	208	3	M-7	3#2	
ACCU#2	COOLING FOR AHU#2	ROOF	ROOF							MC	EC	EC	MC	MC	MC								18.1	208	3	M-8	3#2	
ACCU#3	COOLING FOR AHU#3	ROOF	ROOF							MC	EC	EC	MC	MC	MC								6.0	208	3	P2-32,34,36	3#10	
P#1	HEATING WATER PUMP PRIMARY	118	118							EC													3	208	3	P2-25,27,29	3#12	
P#2	HEATING WATER PUMP STANDBY	118	118							EC													3	208	3	P2-26,28,30	3#12	
P#3	DOMESTIC HOT WATER RECIRC.	118	118	118						EC													1	120	1	P2-10	2#12	
BB#1	BOILER BURNER	118	118							MC	EC	EC	MC										YES	1/2	120	1	P2-10	2#12
TCC#1	TEMPERATURE CONTROL COMP.	118	118	118						MC	EC	EC											1 1/2	208	3	P2-19,21,23	2#12	



PV#	MANUFACTURER AND MODEL NO.	SERVES	CFM	RPM	SP.	HP.	POWER	CURB SIZE		REMARKS
								I.S.	O.S.	
PV#1	LOREN COOK ACE-B120C3B	107/108	360	1110	1/2	1/4	120/1	14 1/2 x 14 1/2	18 1/2 x 18 1/2	
PV#2	LOREN COOK ACE-B225C3B	109	2500	530	3/8	1/4	120/1	24 1/2 x 24 1/2	28 1/2 x 28 1/2	
PV#3	LOREN COOK ACE-B225C3B	109	2500	530	3/8	1/4	120/1	24 1/2 x 24 1/2	28 1/2 x 28 1/2	
PV#4	LOREN COOK ACRU-B180R3B	120	1200	640	3/8	1/4	120/1	24 1/2 x 24 1/2	28 1/2 x 28 1/2	UPBLAST MODEL TO KITCHEN

MECHANICAL LEGEND	
---	WASTE ABOVE GRADE
---	WASTE & VENT BELOW GRADE
---	VENT ABOVE GRADE
---	COLD WATER
---	HOT WATER
---	CIRCULATING HOT WATER
---	GAS PIPING
---	RAIN WATER LEADER ABOVE GRADE
---	RAIN WATER LEADER BELOW GRADE
---	HOT WATER HEATING SUPPLY AND/OR RETURN
---	CONDENSATE PIPING
---	REFRIGERANT SUCTION
---	FLOW BALANCER
---	MANUAL AIR VENT
---	GATE VALVE
---	CHECK VALVE
---	GLOBE VALVE
---	RELIEF VALVE
---	BALANCE COCK
---	3-WAY VALVE
---	CAP
---	TEE UP
---	TEE DOWN
---	ELBOW UP
---	ELBOW DOWN
---	DAY-NIGHT THERMOSTAT
---	HEATING-COOLING THERMOSTAT
---	VENT THROUGH ROOF
---	VENT
---	WASTE
---	COLD WATER
---	HOT WATER
---	CIRCULATING HOT WATER
---	MOP BASIN SINK
---	CLEAN OUT
---	FLOOR DRAIN
---	HOSE BIB
---	URINAL
---	WATER CLOSET
---	LAVATORY
---	ELECTRIC WATER COOLER
---	SINK
---	ROOF DRAIN
---	COMBINATION FIRE/SMOKE DAMPER
---	CABINET UNIT HEATER
---	AIR HANDLING UNIT
---	CONVECTOR
---	GALLONS PER MINUTE
---	1000 BTU PER HOUR
---	POWER VENTILATOR
---	CUBIC FEET PER MINUTE
---	REGISTER
---	EXHAUST
---	OUTSIDE AIR
---	RETURN AIR
---	SPLITTER DAMPER
---	TEMPERATURE CONTROL COMPRESSOR
---	EXHAUST FAN
---	UNIT VENTILATOR
---	HORIZONTAL UNIT HEATER
---	AIR COOLED CONDENSING UNIT
---	GENERAL CONTRACTOR
---	MECHANICAL CONTRACTOR
---	ELECTRICAL CONTRACTOR
---	VENTILATION CONTRACTOR

ELECTRICAL LEGEND	
---	FLUORESCENT FIXTURE
---	CEILING MOUNTED FIXTURE
---	WALL MOUNTED FIXTURE
---	RECESS FIXTURE
---	LIGHTING FIXTURE W/EMERGENCY POWER SUPPLY (Darkened Box)
---	EXIT FIXTURE
---	Capital letters represent schedule reference, small letters are switching
---	SINGLE POLE SWITCH
---	THREE-WAY SWITCH
---	FOUR-WAY SWITCH
---	SWITCH WITH PILOT
---	MANUAL MOTOR STARTER WITH PILOT
---	MANUAL MOTOR STARTER W/ON-OFF-AUTO
---	EMERGENCY BURNER SHUTDOWN
---	EXTERIOR LIGHTING CONTACTOR
---	DUPLEX CONVENIENCE RECEPTACLE
---	FLOOR RECEPTACLE
---	WEATHERPROOF DUPLEX RECEPTACLE
---	POWER RECEPTACLE
---	RANGE RECEPTACLE
---	GFI - GROUND FAULT INTERRUPTING RECEPTACLE
---	SPECIAL OUTLET
---	TELEPHONE OUTLET @ 20"
---	TELEPHONE OUTLET WALL @ 54"
---	CEILING SPEAKER
---	VOLUME CONTROL
---	MICROPHONE OUTLET
---	JUNCTION BOX
---	SWITCHBOARD
---	PANEL
---	DISCONNECT SWITCH
---	MAGNETIC MOTOR STARTER
---	COMBINATION DISCONNECT SWITCH & MAGNETIC STARTER
---	CONTACTOR
---	MOTOR CONNECTION
---	BRANCH CIRCUIT - Number of slashes indicates number of wires
---	PANEL RUN - Letter and number represent panel and circuit
---	FIXED TEMPERATURE THERMAL FIRE ALARM DETECTOR
---	RATE-OF-RISE THERMAL FIRE ALARM DETECTOR
---	IONIZATION DUCT DETECTOR
---	MANUAL BREAKGLASS STATION
---	FIRE ALARM HORN - AUDIBLE/VISUAL
---	FIRE ALARM EQUIPMENT INTERLOCK
---	FIRE ALARM PANEL
---	GENERAL PLAN NOTE
---	WEATHERPROOF
---	INDICATES MOUNTING HEIGHT
---	REGISTER
---	BEHIND WATER COOLER
---	BACK SPLASH
---	HORIZONTAL



ROBY, QUINTAL & EVERSON CONSULTING ENGINEERS MITCHELL, SOUTH DAKOTA		REVISED DATE 7/29/94	CLASSROOM/MULTI-PURPOSE ADD. ZION LUTHERAN CHURCH ABERDEEN, SOUTH DAKOTA	MOTOR SCHEDULE / LEGENDS SITE PLAN	DRAWN BY TRACED BY CHECKED BY DATE 8/10/93	(M-1) OF: 8 E-1 OF: 5 DWG. NO.
		CERT NO. C-116	Horgan, Kirchgasser, Geisler & Assoc. ABERDEEN, S.D.	8/10/93		